



# style serving

A functional but uninspired cooking zone is transformed into a light-filled family kitchen

WORDS JANE LLEWELLYN STYLING STEPHANIE POWELL PHOTOGRAPHY CRAIG WALL

Space really was the final frontier for this young and growing family. With four young boys aged six months to 13 years, owners Peter and Lauren were keen for their kitchen to be as childproof and storage savvy as possible, without compromising on style. Interior designer Melissa Healy of Futari Design solved this decor conundrum, transforming the room into a dazzling space that inspires creative cooking and casual entertaining.



### ADULTS ONLY

You only have to glance at the stunning Liebherr stainless-steel refrigerator with its handy built-in wine cellar to know the adults in this house are well catered for! Despite the convenience of a wine cellar so close to hand, Lauren insists it's the actually the handy, built-in Miele stainless-steel coffee machine that has really captured her heart.

### COLOUR CUE

The kitchen's drab colour scheme gave way to a new palette of bright and timeless warm whites. Depth was added with CaesarStone benchtops in Nougat and a glass splashback in Resene Arrowtown. "It's so easy to clean!" says Lauren. Bursts of orange feature alongside sophisticated black accessories, such as the Karlsson 'Mixed Numbers' clock from Ollie & Lloyd.

### CHILD MINDERS

Miele appliances, including an oven, dishwasher, and rangehood, cover all bases. "A chef friend persuaded us to choose the Miele induction cooktop because it's as effective as gas but really safe," says Lauren. "It features pan recognition and a system lock to protect against burns." A childproof Zip HydroTap, fitted with a safety switch, produces boiling and filtered water on demand.

## budget breakdown

Miele appliances .....	\$20,000
Zip HydroTap .....	\$2310
Carpentry .....	\$26,000
Plumbing .....	\$6000
Sinks and Teknobili tap .....	\$1500
Stools .....	\$500
Fridge .....	\$8900
Tiles and paint .....	\$680

**total \$65,890**

Contact Melissa Healy at Futari Design on 0418 184 208 or visit [www.futaridesign.com.au](http://www.futaridesign.com.au).

### ONWARDS AND UPWARDS

Stepping into this light-drenched room, it is difficult to imagine that it was once a poky kitchen and the bane of this family's lives. Building upwards and raising the height of the ceiling effectively doubled the sense of space and light in the heart of the home. New bi-fold windows bring light streaming into the kitchen and offer glamorous views of the pool (opposite, top left).



before

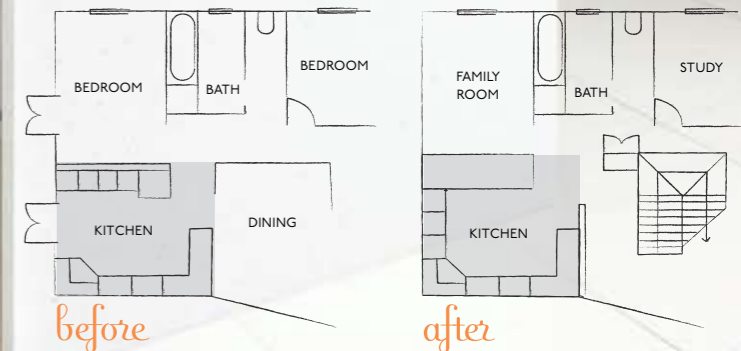


### ISLAND HOME

Positioned to catch the light, the sleek island bench is fitted with deep, soft-close drawers on one side for extra storage. Tucked under the other side are Italian-designed stools from Life Interiors ([www.lifeinteriors.com.au](http://www.lifeinteriors.com.au)) in a bright citric orange, making this the site of many an informal meal. **LD**

### SEAMLESS STYLE

The sense of space in the room has been subtly enhanced by matching the 'Duna' tiles in Stone (from Metro Tiles; visit [www.metrotiles.com.au](http://www.metrotiles.com.au)) on the kitchen floor to the sandstone-look porcelain tiles surrounding the pool. The effect is a seamless connection between the two living zones – making it easier to enjoy both!



before

after